




Jumbo 3D SUPER

WELCOME TO THE FUTURE 

World's 1st 3D Wheel Aligner for Multi-Axle Trucks, Buses & Trailers



WELCOME TO THE FUTURE in Multi-axle Alignment
Measure all **5** axles under **3** min.

 **MANATEC**TM
Partners in Progress

- One shot Runout compensation of all 5 axles
- One shot Caster swing for twin steer axles
- Ideal for all workshops, tyre shops & OEM end of line requirements



PATENTED



Jumbo 3D Super supplied with **10** targets and integrated wheel brackets enables the user to measure results of all 5 axles *simultaneously*.

- One shot Runout compensation of all 5 axles
- One shot caster swing for twin steer axles
- Quick results, high productivity
- Less labour cost

Innovative Image Processing Technology



Jumbo 3D uses latest, innovative, digital-imaging technology by deploying quad camera system for data-acquisition. High resolution digital cameras, two per side, operate with intelligent software & capture seamless images of targets

Sample Vehicle Configuration



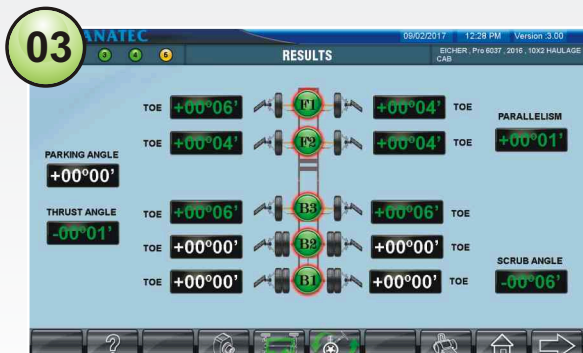
Get Alignment results of all 5 axles under **3 minutes**



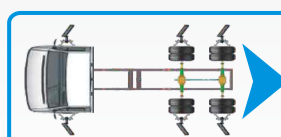
One shot Runout Compensation



One shot Caster swing of twin steer axles



All results in one screen



Get alignment results of 3 axles in just 2 mins!!

2 min 50 sec

No Electronics on wheels



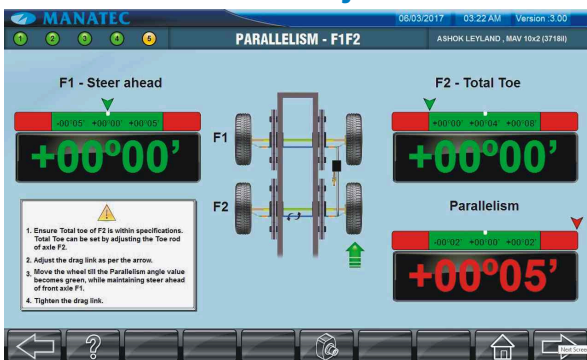
- No expensive service bills due to accidental drop of electronic sensors
- No sensor calibration issues
- No battery discharge issues
- Compact and light weight

One Shot Caster swing for twin axles



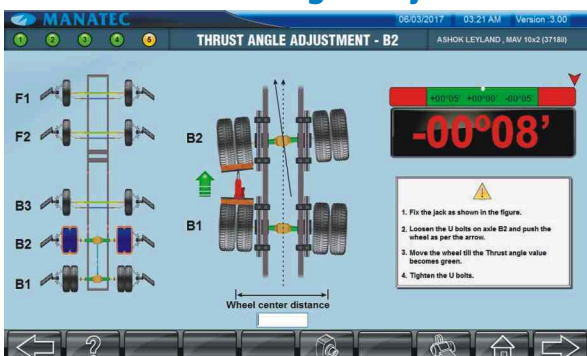
- Caster swing can be performed for twin steer axles simultaneously
- 4 nos Rotary plates supplied as standard accessory
- No need to remove and refix the targets for each axle
- Increases productivity

Parallelism Adjustment



Alignment of Front twin steerable axles to maintain parallel condition

Thrust / Scrub Angle Adjustment



Alignment of Rear multi axles

1st in the World One shot Runout Compensation of all 5 axles



- Runout carried out by driving the vehicle
- Alignment completed within 1/3rd the time of conventional methods
- No need to remove and refix the clamps and targets for each axle
- No Jacking up of wheels
- No need for vehicle pusher
- Enormous time saving and productivity increased

Tractor & Trailer Alignment

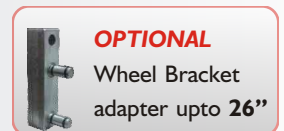


Universal Wheel Bracket

Suitable for 12" – 24" rim diameter.



- Inner : 12" – 20"
- Outer : 16" – 24"

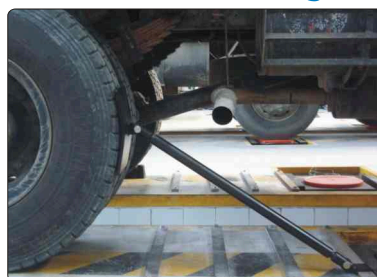


Double end rim locking pins for operating on steel and alloy wheels



Universal pin adaptor serves as extender for using the pins for protruding rims

Single Axle adjustment



Thrust angle adjustment in a single axle vehicle is a tedious job using conventional trial & error method.

Single axle adjuster tool helps in effortlessly adjusting the thrust angle precisely.

Saves considerable time and energy.

Tablet operation

Highly user-friendly Wi-Fi enabled tablet & Mobile device to display alignment results & to operate the PC from the Alignment bay. Avoids multiple trips to the PC console.



Technical Specifications

Measurement parameters	Range	Accuracy
Camber (Front / Rear)	± 15° 00'	± 00° 02'
Caster	± 28° 00'	± 00° 05'
Kingpin Inclination	± 25° 00'	± 00° 05'
Toe (Front / Rear)	± 20° 00'	± 00° 02'
Total Toe	± 40° 00'	± 00° 04'
Setback (Front / Rear)	± 25 mm	± 2 mm
Scrub / Thrust angle	± 10° 00'	± 00° 02'
Runout	± 10° 00'	± 00° 02'
Included angle	± 40° 00'	± 00° 05'
Track width difference	± 150 mm	± 2 mm
Toe Out on Turns	± 20° 00'	± 00° 20'
Lock angle	± 60° 00'	± 00° 20'
Power supply	230V AC, 50Hz / 110V AC, 60Hz	
Power	250W	
Operating temperature	0° - 50°C	

Mobile stands for storing Wheel brackets & Targets



- 4 Mobile stands provided for storing Wheel brackets & Targets, 2 on each side
- Easy access to technicians
- Saves multiple trips

Dual Monitor



Additional monitor for operator convenience to view from the pit.



Standard Accessories

- Wheel brackets(12"-24")
- Target plates
- Rotary plates (7 ton)
- Steering lock
- Brake pedal lock HCV
- Brake pedal lock LCV
- Adaptor for rim locking pins
- PC console with Windows embedded OS, Key board & Mouse
- LED monitor (21.5") HDMI interface
- LED monitor secondary (21.5") VGA interface
- Target stands (2Tx2, 3Tx2)
- Remote
- Truck alignment & Data manager software
- Single axle adjuster
- Wheel stoppers

- 10 Nos.
- 10 Nos.
- 4 Nos.
- 1 No.
- 1 No.
- 40 Nos.
- 1 No.
- 1 No.
- 1 No.
- 4 Nos.
- 1 No.
- 1 No.
- 1 No.
- 1 No.
- 1 No.
- 2 Nos.

Alignment Result Printout

WHEEL ALIGNMENT CENTRE						
Mohlan Nagar, Puducherry - 605 005.						
WHEEL ALIGNMENT RESULTS				Job Number - 24595		
Date	: 14/05/2015	TIME	: 11:20 am	Regn. No.	: PY-01-AE-0528	
Mechanic	: Ram	Owner	: MANATEC	Address	: INDUSTRIAL ESTATE	
Odometer	: 14695	City	: PUDUCHERRY	State	: PUDUCHERRY	
Make	: ASHOK LEYLAND	Phone	: 2243225			
Model	: ---					
		Before correction	Specification	Min	Target	Max
						After correction
FRONT AXLE ALIGNMENT RESULTS - F1						
CAMBER	Left	-00°08'	+00°15'	+00°25'	+00°35'	+00°30'
	Right	+00°39'	+00°15'	+00°25'	+0°35'	+00°30'
	Max.diff. Left/Right	00°47'	---	00°50'	---	00°00'
KINGPIN	Left	+10°04'	+06°30'	+06°30'	+06°30'	+10°04'
	Right	+11°19'	+06°30'	+06°30'	+06°30'	+11°19'
	Max.diff. Left/Right	01°15'	---	03°00'	---	01°15'
INCLUDED ANGLE	Left	+09°56'	+06°55'	+06°55'	+06°55'	+10°34'
	Right	+11°58'	+06°55'	+06°55'	+06°55'	+11°49'
	Max.diff. Left/Right	02°02'	---	+03°00'	---	00°15'
CASTER	Left	+03°38'	+03°00'	+03°30'	+04°00'	+03°49'
	Right	+03°48'	+03°00'	+03°30'	+04°00'	+03°39'
	Max.diff. Left/Right	00°10'	---	01°30'	---	00°10'
TOE (mm)	Left	+7.5	+0.6	+2.0	+3.4	+2.1
	Right	-4.3	+0.6	+2.0	+3.4	+2.0
	Max.diff. Left/Right	11.8	---	4.0	---	0.1
TOTAL TOE (mm)		+3.3	+1.2	+4.0	+6.8	+4.1

Optional Accessories

- Wheel bracket extension adaptors
- Frame offset gauge
- Tyre dia guage
- Printer
- 4 shaft calibration kit (HCV)

- 40 Nos.
- 1 No.
- 1 No.
- 1 No.
- 1 No.

Car Kit (Optional)

- Rim locking pins (for Runflat tyre rims & Fancy disc)
- Rim locking pins (for Standard & Steel rims)
- Car alignment & Vehicle data software
- Front target plate extension spacer 150 mm long

- 16 Nos.
- 16 Nos.
- 1 No.
- 4 Nos.



C-22 & 23, Industrial Estate, Thattanchavady, Pondicherry - 605 009. INDIA.

Ph : +91 413 2232900 ❖ Fax : +91 413 2232938

Email : sales@manatec.in / exports@manatec.in

ISO 9001 : 2015 Align to Succeed **Toll Free Help Line 1800-425-2080**

